

NK Nadeer

“A Truly Noble Horse”

The last of the five grey stallions in the NK Arabian breeding has passed away.

by Hans J. Nagel

photos: Joanna Jonientz

A

few weeks ago, the last of the five grey stallions that have characterized the Arabian breed of Katharinenhof in the first 50 years of its existence and given it the typical unmistakable “NK look”, has died at the age of 18.

This was NK Nadeer; a truly noble horse, trusting, with a kind character, without falseness, full of temperament and fiery when given the opportunity. He ended a 53-year era and heralded the new one.

The first 15 years were characterized by searching and trying, and for the last 38 years by a strictly defined breeding concept. Each of these five stallions has made a specifically important contribution to the development of the Katharinenhof Arabian population as it is today.

The first of these five grey horses was Jamil, a Madkour I son out of the mare Hanan, who came from the Egyptian stud El Zahraa. Via Hungary and the Babolna State Stud, she was the first to move into the newly renovated mare stable at Katharinenhof in 1970. Jamil and his mother became the founders of the so-called “Obayan” line, one of the dam lines on which the well-thought-out breeding concept of this type, is based. This model is unique in the world and was conceived in accordance with historical guidelines.

This NK Arabian breed is a closed population based on four mare families and

has been self-sustaining for years.

If we look closely, it was the Jamil daughter Amroulla who founded this valuable mare line with three of her of six daughters. She was the only and last Jamil daughter born at Katharinenhof after his return from Ansata Stud in the USA. This stallion then died in an accident at the age of 11. His unfortunate early death meant that his influence in breeding remained very limited. He was a thoroughly masculine horse with a high tail carriage, an extraordinarily solid and correct foundation, with legs as hard as steel and of wonderful movement and charisma. What clearly stood out was his head, small in proportion to his body, with exceptionally large eyes and small ears. He was always a prudent and people-oriented stallion. This level-headedness, docility and his movements led to the fact that during the stallion performance test at the Marbach State Stud, he received the second-best score amongst approximately 40 Warmblood horses and 5 other Arabians, in the compulsory dressage event.

The second was Ansata Halim Shah, a dominant grey who had moved to Katharinenhof for two years as a lease stallion, in exchange with Jamil who went to Ansata Stud.

Ansata Halim Shah was distinguished by two important characteristics that were among the reasons for his selection: an ideal



NK NADEER (*NK Hafid Jamil x NK Nadirah*)

sloping shoulder and a well-shaped longer croup. Many Egyptian Arabians showed great weaknesses in just these two areas.

Ansata Halim Shah gave these important characteristics, with the greatest certainty, to all his 31 sons and daughters born in Germany. He thus made a great contribution to the quality of the German Egyptian Arabian breed. His appealing type with a somewhat softer appearance, was different from the more masculine Jamil.

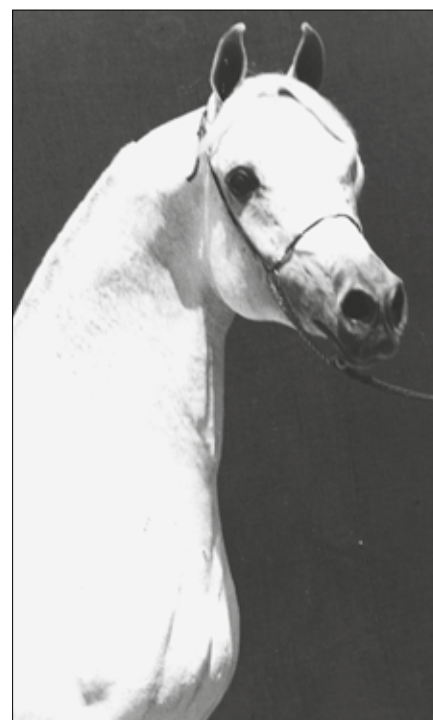
Ansata Halim Shah found many lovers in Germany and as well later in the Gulf States. The well-known Al Shaqab Stud in Qatar tried everything to bring this stallion to their country. His success in Germany had made them take this step.

No other stallion than Ansata Halim Shah, who also had to be presented at the German stallion licensing to obtain a breeding permit, produced so many licensed sons. A total of nine sons licensed by the Association, two more later licensed at the Marbach State Stud, and finally the Babolna State Stud in Hungary also used

two more sons in its Arabian breeding. In total, there were 13 stallions. In the years before, only a few licensed Arabian stallions had produced one or two licensed offspring and so many others not a single one.

The third stallion was Salaa el Dine, one of the nine licensed Ansata Halim Shah sons, he was also a Hanan son. His shoulder, neck and saddle position were excellent and topline, back and croup, as required. He inherited these traits with utmost certainty and in this respect became a godsend for the Katharinenhof. At the same time, he became the first homebred chief sire of the Katharinenhof with a long-term decisive influence.

All Katharinenhof mares were an excellent match for this stallion and it could be noted with satisfaction that he succeeded in producing both valuable sons and daughters of the finest quality, a highly valued trait that only few breeding stallions excel at. Many mare owners from European breeders sent mares to this impressive and much sought-after stallion. Breeders



JAMIL (*Madkour I x Hanan*)



ANSATA HALIM SHAH (*Ansata Ibn Halima x Ansata Rosetta*)



SALAA EL DINE (*Ansata Halim Shah x Hanan*)

from Italy especially appreciated him as a sire, and for years the guest mare stable, at Katharinenhof was full.

Salaa El Dine was indispensable for the development of the second important mare family, the so-called “Hadban” line and of great value for further generations. At a late age, the Egyptian-born Alaa El Dine daughter Lotfeia had given birth to her penultimate foal. It was Nashua, a small petite chestnut mare, and her sire was Salaa El Dine. This mare was a real surprise. There was not a visitor who was not moved with admiration when he saw Nashua. She was beautiful at all ages, whether as a foal, young mare, or later broodmare. She was simply different from all other Egyptian Arabians. She did not resemble her sire, her dam, or any of her living ancestors in Egypt. She was one of a kind.

Nashua gave birth to three daughters in mating with the Salaa El Dine son “Adnan” and three more excellent mares in mating with the Salaa El Dine son “Nahaman”. This half-sibling pairing thus proved to be a complete success, resulting in six beautiful Arabian grey mares, all of which developed

into typical representatives of the Hadban line.

The Nahaman daughter “NK Nabeela” and the two Adnan daughters “Nadirah” and “Nasrin” finally founded the Hadban family at Katharinenhof. They became the largest group of the four strains, having eight foundation mares.

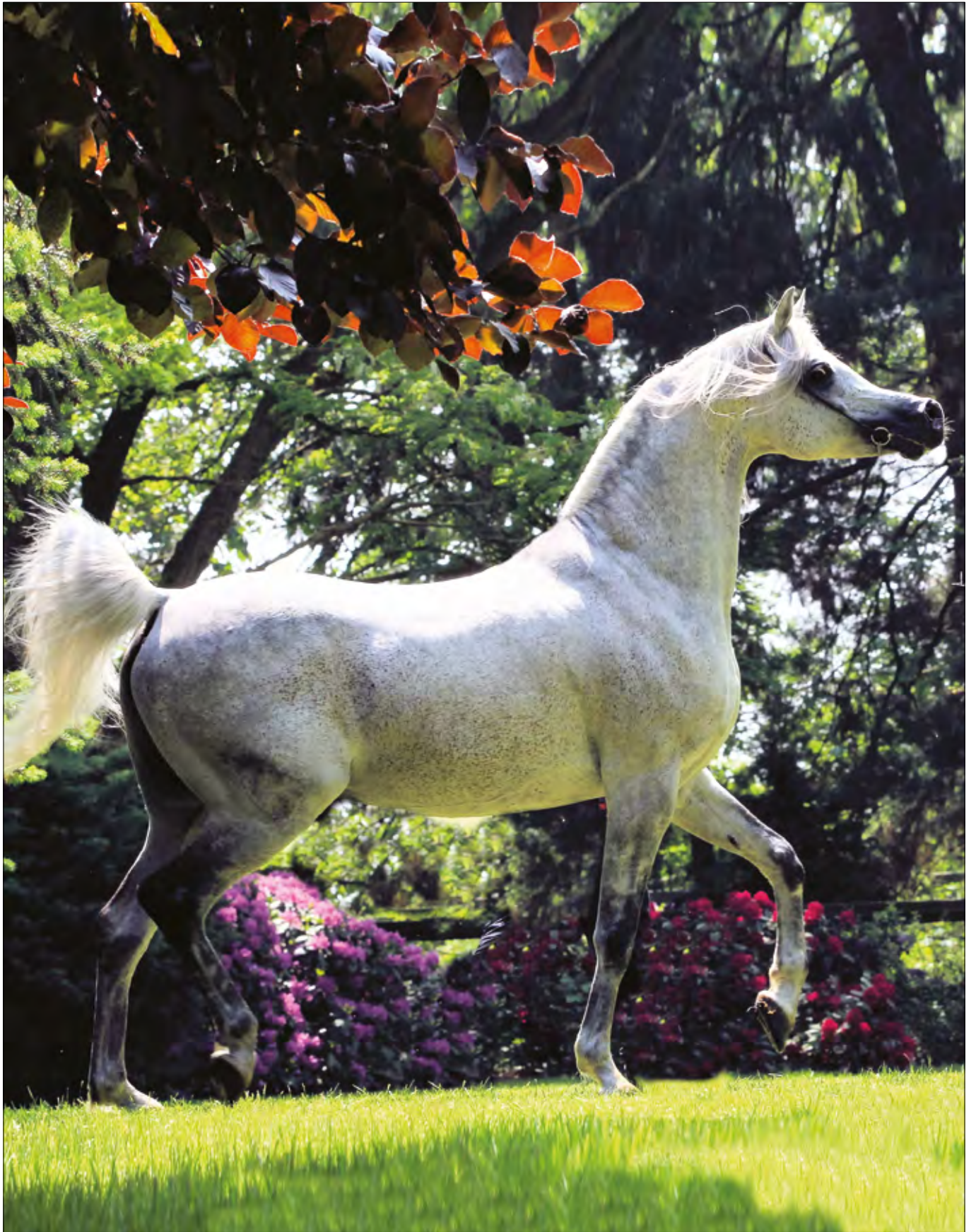
NK Hafid Jamil was the fourth gray stallion. He was born as a very weak colt, but he gave a hint that something extraordinary could develop. And indeed, in the following six months, a beautiful head emerged, a solid posture and ideal shoulders. The rest of this horse, as some fault-viewers would describe, was highly questionable. If there had still been a stallion inspection, as in the 70s and 80s, this stallion would not have been classified as suitable for breeding. But it turned out completely different. During his time as a young stallion at Katharinenhof he became the sire of NK Nadeer out of NK Nadirah, the sire of NK Kamar El Dine out of Ansata Ken Ranya and finally of Jamal El Dine, a full brother to NK Kamar El Dine. And his amazing story went even further. First, as I said, he stayed at Katharinenhof



NK HAFID JAMIL (*Ibn Nejdj x Helala*)



IBN GALAL (Magdi) (*Galal x Mohga*)



NK NADEER (NK Hafid Jamil x NK Nadinah)



NK NABHAN (*NK Nadeer x NK Nerham*)

for several years; then he moved back and forth between Katharinenhof and Al Nakeeb Stud in England. Later, he travelled to Saudi Arabia as a lease stallion, and then to Kuwait. He finally passed away in his home at the age of 20. Wherever he worked as a stallion, his children and grandchildren were highly appreciated, for breeding and at shows which are nowadays held with great passion in Arabian countries. His most internationally known daughter was NK Nakeebya, born at Katharinenhof and later one of the best broodmares in studs in Kuwait and Bahrain.

NK Hafid Jamil descended on her mother's side from the Dahman-Shahwan dam line, the third in the closed NK Katharinenhof concept. She is based on two Ansata mares imported from the USA after Jamil's sudden passing. The mares Ansata Gloriana and Ansata Prima Rose, both from the Egyptian

Bukra line and both Jamil daughters, born at Ansata Stud during Jamil's stay in the USA. In their new home at Katharinenhof, both mares were bred to Salaa El Dine. The former gave birth to the bay mare NK Helala, the latter to the mare Ansata Ken Ranya. After that, the breeder's luck remained very modest. In this family were born mainly colts and finally until today remained only two mares representing this line: NK Habiba and NK Hawa, both attractive flea-bitten grey mares. This Dahman-Shahwan family obviously has a lot of catching up to do.

It is due to NK Hafid Jamil that this mare line, very interesting in its original composition, became very well-known abroad. Worldwide he left almost 200 offspring, only a few of them in Germany. Very few German breeders were convinced of this stallion.



NK HABIBA (*NK Nadeer x Ansata Ken Ranya*)



NK NINA (*NK Nadeer x NK Bint Nashua*)

The last of these five grey stallions was NK Nadeer. It is certainly permissible to say he was the gentleman among them, truly a distinguished horse and the one with the most refined and benign demeanor; calm in breeding, neither wild nor impetuous, and when presented to visitors, he seemed to enjoy such a presentation and always kept himself under control.

NK Nadeer impressed with his typical Arabian head shape; a slightly curved, noble profile, classic and elegant, far from

today's exaggerated Arabian heads with the fashionable dish under the forehead area. He had small ears and a strikingly small mouth with large wide nostrils; this stallion could have drunk sweet tea from a cup, as the Bedouins once claimed of their horses. His mother NK Nadirah, the Adnan daughter from Nashua, had passed this on to him. Today, four of his daughters live at Katharinenhof, firmly embedded in the breeding concept.



NK NAZLI (*NK Nadeer x NK Nasrin*)

These five grey stallions, Jamil, Ansata Halim Shah, Salaa El Dine, NK Hafid Jamil and NK Nadeer, have been the ones who have determined the breeding activities at Katharinenhof over the past fifty years. They are the first to come to mind, when one thinks back over the years. Only then do the others emerge from the shadows of the past. One of these others was the chestnut stallion Ibn Galal, also an import from El Zahraa Stud in Egypt. He first worked as a stud stallion in Babolna, Hungary and for a time as a lease stallion at Katharinenhof, but was relatively quickly replaced by his son Ibn Galal I. As a leased stallion, he played a major role in the development of the fourth and last family, the “Siglawy” strain, with Mahiba, imported from Egypt. This was during the first decade of Katharinenhof Stud.

Mahiba appealed as a very typical and fine

chestnut mare. She was a granddaughter of the famous chestnut Moniet El Nefous in El Zarah and her dam Mouna was without doubt the prettiest among the three known Moniet El Nefous daughters. Mahiba and her daughters and granddaughters were characterized by high fertility, with the result that she could look back on the largest progeny in German-Egyptian Arabian breeding.

In summary, these four dam lines have been the basis for the closed NK breeding concept for 35 years, consisting of an Obayan, a Hadban, a Dahman Shahwan and a Siglawy family. During this time, only mares and stallions from our own stock were selected as breeding horses for our own breeding. Foreign stallions or mares from other breeding have not been used in this concept for 35 years.

NK Nadeer, the last grey stallion, has now passed away. Interestingly, this stallion has opened a new era, in which the appearance of Katharinenhof's NK population has changed. For the last ten years or so, the Katharinenhof breeding stock has become more colorful. Only the Siglawy family was bred from the very beginning and purposely as chestnuts, according to the famous chestnut foundation mare Moniet El Nefous. Otherwise, the grey color dominated the mare herd with only one exception. It was flea-bitten-grey, that determined the color picture. Now bay, black and even more chestnut have been added.

Some of the NK Nadeer and NK Nabhan daughters, as a part of the concept, have been valuable broodmares in the NK Arabian concept for several years, such as the mares NK Nasly, NK Nina and NK Habiba, three NK Nadeer daughters and further NK Nala, NK Amsha, NK Nay and NK Nawal, four NK Nabhan daughters. It was NK Nadeer himself and especially his bay son NK Nabhan out of NK Nerham who

brought about this change. NK Nabhan's sons and daughters wear predominantly a bay coat, some others are chestnuts or even blacks, like NK Naya, NK Nouna or NK Lamiya. This color development may superficially be perceived as nothing strange. However, this is far from it. Here the closed breeding program shows one of its effects. Through a constantly growing kinship linkage, colors and traits from the past are increasingly reappearing, which were covered up using the grey stallions and had only few chances to play a role in the past. Like the bay color of the foundation mare Hanan, the light chestnut color of the significant Nashua or the dark chestnut color of Alaa El Dine, after all the sire of three of the four original foundation mares. The color chromosome is one of the bigger chromosomes and in the process of reproduction these bigger ones are pulling with them more or less other chromosomes of different features, adjacent to them, into the new emerging chromosome combination. That means, other features



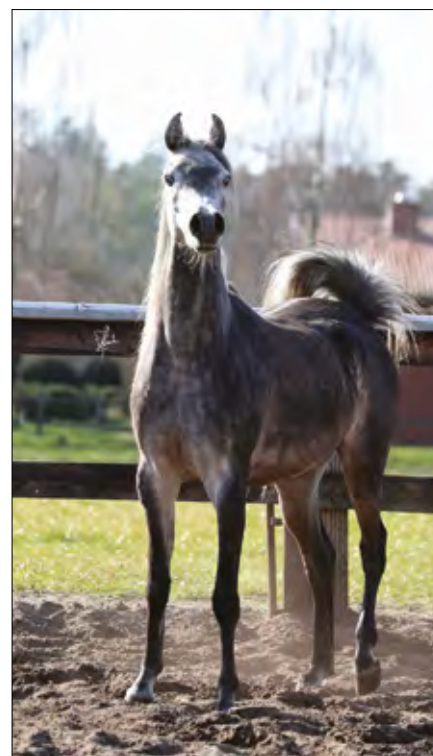
NK NAY (NK Nabham x NK Nawal)



NK NIZAM (*NK Hafid Jamil x NK Nadinah*)



NK NAHLA (*NK Hafid Jamil x NK Nakibiya*)



NK NAALA (*NK Nabban x NK Nadinah*)



NK AMAL EL DINE (*NK Nizam x NK Abla*)



NK NABHAN (*NK Nadeer x NK Nerham*)



NK NADEER (*NK Hafid Jamil x NK Nadirah*)

are connected to the color and with appearance of another color, also other features may appear as well. This brings a good refreshment into a population. The bay NK Nabhan, the son of NK Nadeer, stands as a perfect example: both its parents and grandparents are grey, he is however a bay and taller than all of them, the shape of his head different, his neck amazingly long and elegant and his top-line as desired. Thus, a change of color brought new possibilities for future breeding.

NK Nadeer and also his son NK Nabhan, have substantially refreshed the breeding stock by adding a total of eight daughters to the population. A new generation of mares are testimony to a welcome positive change. NK Nadeer stands at the beginning of

this development, which cannot be appreciated highly enough.

Only later, the bay NK Nizam, again a NK Hafid Jamil son, was added as a stud stallion, who has also contributed to this pleasant color development in recent years. However, in order not to be finally crushed by “color” and to get into an irreversible dead end within the breeding, due to colored horses only, a typey grey stallion was again needed.

A young stallion, NK Amal El Dine with his pleasantly striking type, recommended himself as a stallion candidate. He is still today a very dark horse from the “Obayan” line, which will however become grey very late.

So, the grey color will not be lost, the heritage of the five progenitors will stay alive. ○



Dr. Nagel with NK NADIRAH